

Fitting Instructions:
Speed Triple 1050
Grab Rail Kit - A9758119



Thank you for choosing this Triumph genuine accessory kit. This accessory kit is the product of Triumph's use of proven engineering, exhaustive testing, and continuous striving for superior reliability, safety and performance.

Completely read all of these instructions before commencing the installation of the accessory kit in order to become thoroughly familiar with the kit's features and the installation process.

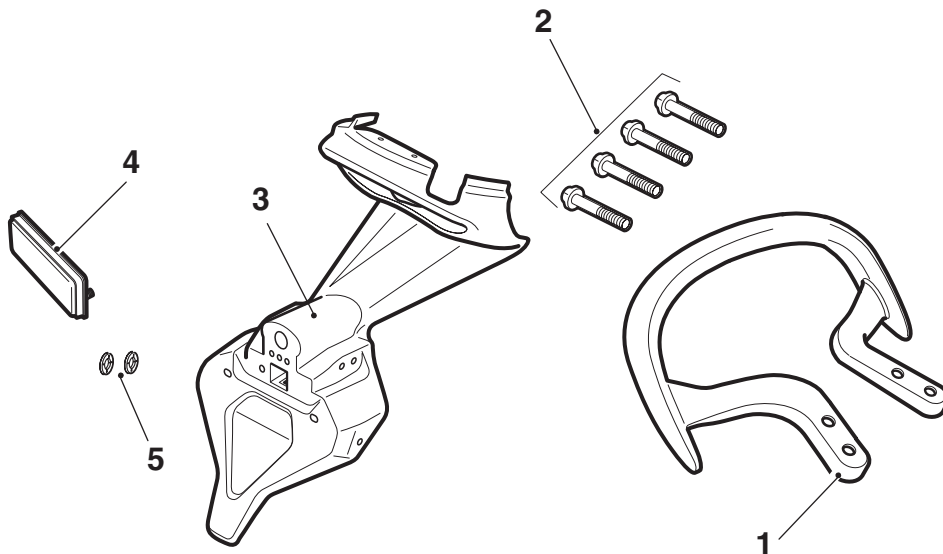
These instructions should be considered a permanent part of your accessory kit, and should remain with it even if your accessory equipped motorcycle is subsequently sold.

Warning

This accessory kit is designed for use on Triumph Speed Triple 1050 motorcycles only and should not be fitted to any other Triumph model or to any other manufacturers motorcycle. Fitting this accessory kit to any other Triumph model, or to any other manufacturers motorcycle, may interfere with the rider and could affect the handling, stability or other aspects of the motorcycles operation which may result in loss of motorcycle control and an accident.

Warning

Always have Triumph approved parts, accessories and conversions fitted by a trained technician of an authorised Triumph dealer. The fitment of parts, accessories and conversions by a technician who is not of an authorised Triumph dealer may affect the handling, stability or other aspects of the motorcycles operation which may result in loss of motorcycle control and an accident.



Parts Supplied:

- | | | | |
|--|-------|-----------------------------|-------|
| 1. Grab rail | 1 off | 4. Reflector | 1 off |
| 2. Bolt, M8 x 35. | 4 off | 5. Retaining bush | 2 off |
| 3. Rear licence plate moulding | 1 off | | |

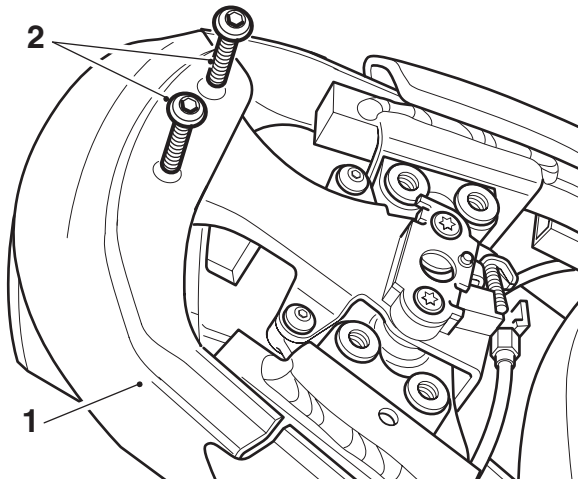
Warning

Throughout this operation, ensure that the motorcycle is stabilised and adequately supported on a paddock stand to prevent risk of injury from the motorcycle falling.

Warning

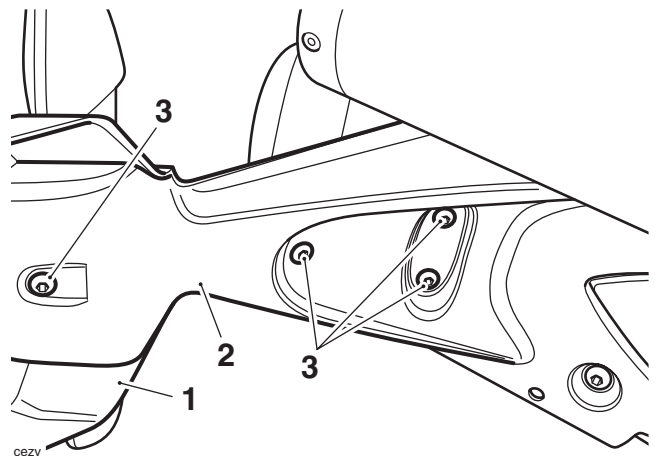
A torque wrench of known accurate calibration must be used when fitting this accessory kit. Failure to tighten any of the fasteners to the correct torque specification may result in loss of motorcycle control and an accident.

1. Remove the seat.
2. Disconnect the battery, negative (black) lead first.
3. Remove the rear licence plate. Retain the licence plate and fixings for reuse.
4. Remove the rear licence plate moulding fixings. Retain the fixings for reuse.



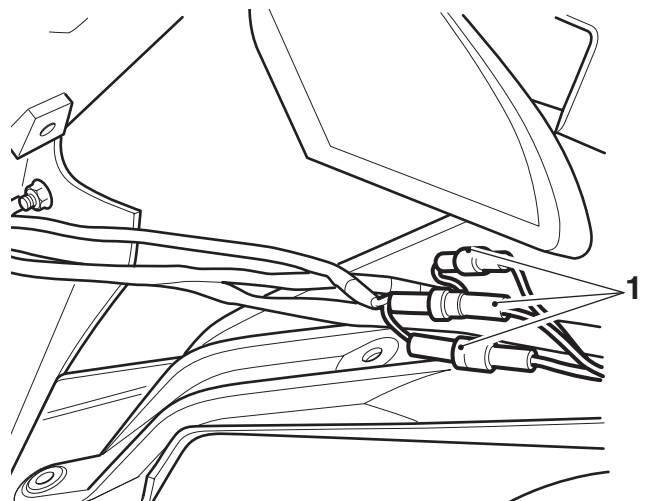
1. Rear licence plate moulding
2. Fixings

5. Remove the rear undertray moulding fixings. Remove the rear licence plate moulding. Retain the fixings for reuse. Retain the rear licence plate moulding for use if the motorcycle is returned to its original condition.



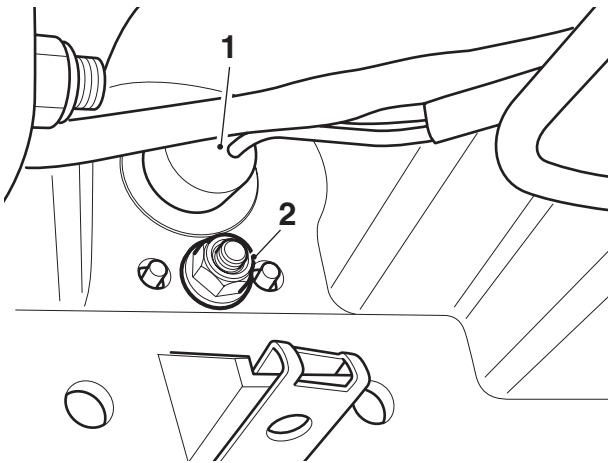
1. Rear licence plate moulding
2. Rear undertray moulding
3. Fixings

6. Disconnect the rear licence plate lamp and indicator connections from the motorcycle wiring harness.



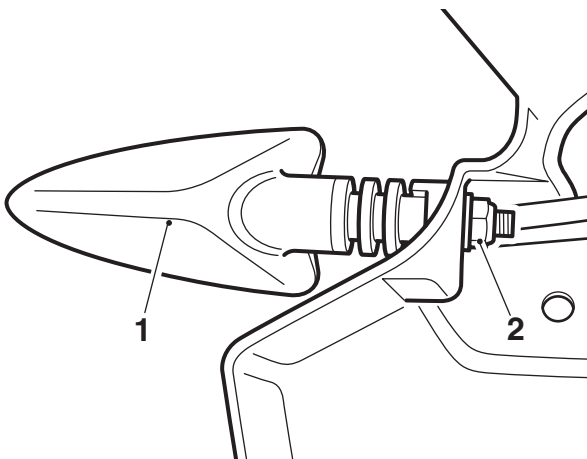
1. Indicator and licence plate lamp connections

7. Remove the rear licence plate lamp fixing and remove the lamp. Retain the licence plate lamp and fixings for reuse.



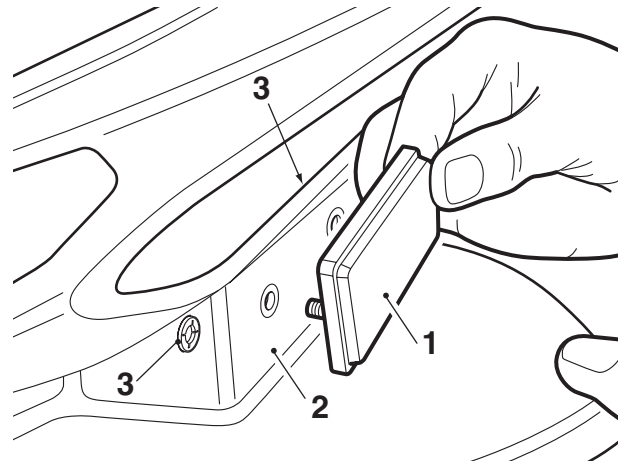
- 1. Rear licence plate lamp**
2. Fixing

8. Remove the left and right hand side rear direction indicators. Retain the direction indicators and fixings for reuse.



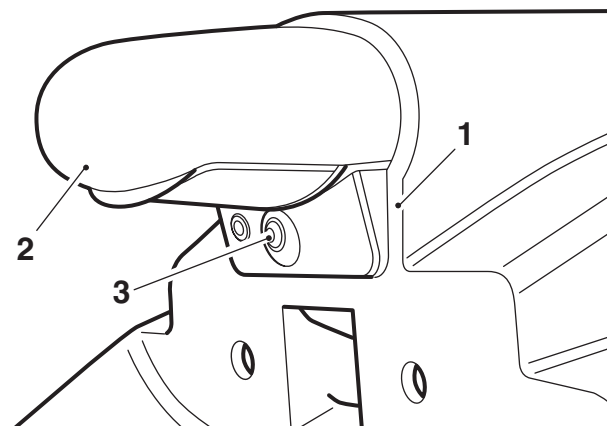
- 1. Rear direction indicator, right hand shown**
2. Fixing

9. Fit the new reflector supplied into the new licence plate moulding and retain with the retaining bushes as shown.



- 1. Reflector**
2. Licence plate moulding
3. Retaining bushes

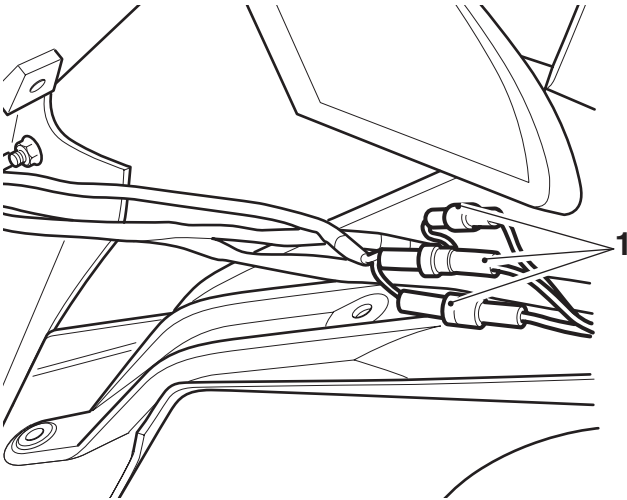
10. Fit the licence plate lamp onto the new moulding and retain with the original fixing. Tighten to **2 Nm**.



- 1. Licence plate moulding**
2. Licence plate lamp
3. Fixing

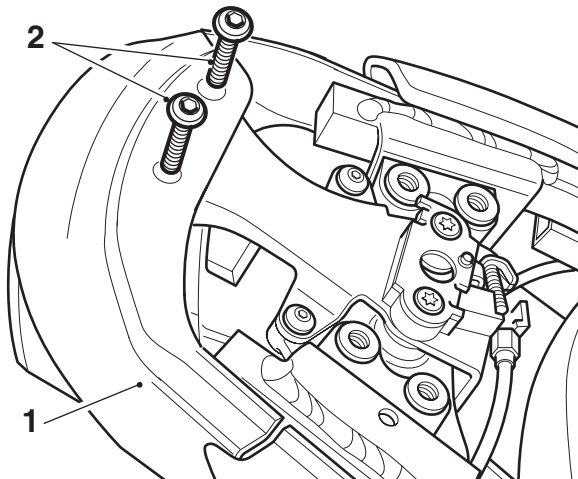
11. Fit the original left and right hand direction indicators onto the new moulding. Ensure the drain hole on the direction indicator faces down. Retain with the original fixings. Tighten the fixings to **5 Nm**.

12. Reconnect the rear licence plate lamp and direction indicator connections to the motorcycle wiring harness.



1. Direction indicator and licence plate lamp connections

13. Fit the new licence plate moulding in position on the motorcycle, ensuring that the licence plate lamp or direction indicator wiring is not trapped, and retain with the original fixings. Tighten the fixings to **4 Nm**.

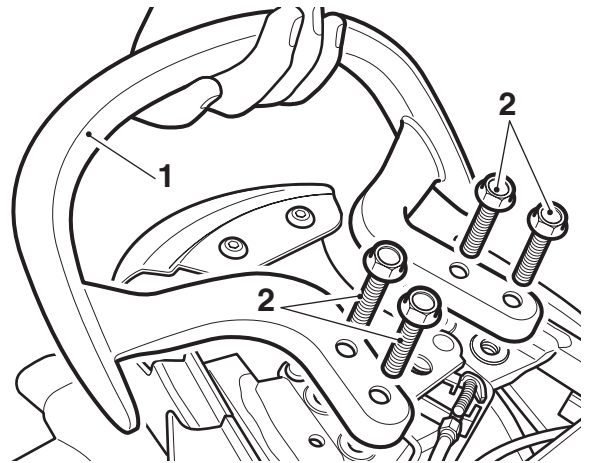


1. Licence plate moulding

2. Fixings

14. Refit the original rear undertray moulding fixings. Tighten the fixings to **4 Nm**.

15. Locate the grab rail in position on the rear subframe bridge and secure with the new M8 x 35 bolts provided. Tighten to **27 Nm**.



1. Grab rail

2. Fixings

16. Fit the rear licence plate and secure with the original fixings.
17. Reconnect the battery, positive (red) lead first.
18. Refit the seat.
19. Remove the paddock stand.

 **Warning**

After fitting the accessory kit the motorcycle will exhibit new handling characteristics. Operate the motorcycle in a safe area free from traffic to gain familiarity with any new characteristics. Operation of the motorcycle when not familiar with any new handling characteristics may result in loss of motorcycle control and an accident.

 **Warning**

If, after fitment of this accessory kit, you have any doubt about the performance of any aspect of the motorcycle, contact an authorised Triumph dealer and do not ride the motorcycle until the authorised dealer has declared it fit for use. Riding a motorcycle when there is any doubt as to any aspect of the performance of the motorcycle may result in loss of control of the motorcycle leading to an accident.

 **Warning**

Never ride an accessory equipped motorcycle at speeds above 80 mph (130 km/h).
The presence of accessories will cause changes in the stability and handling of the motorcycle. Failure to allow for changes in motorcycle stability may lead to loss of control or an accident.
Remember that the 80 mph (130km/h) limit will be reduced by the fitting of non-approved accessories, incorrect loading, worn tyres, overall motorcycle condition and poor road or weather conditions.

 **Warning**

The motorcycle must not be operated above the legal road speed limit except in closed course conditions.

 **Warning**

Only operate this Triumph motorcycle at high speed in closed-course on road competition or on closed course racetracks. High speed operation should only be attempted by riders who have been instructed in the techniques necessary for high speed riding and are familiar with the motorcycle's characteristics in all conditions.
High speed operation in any other circumstances is dangerous and will lead to loss of motorcycle control and an accident.